

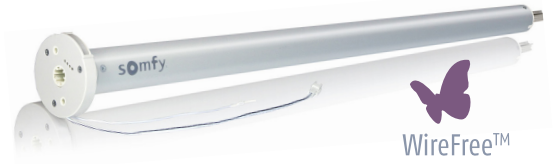
## Roll Up 28 WireFree™ RTS (Li-ion)

Part #1240291



Offers control via Radio Technology Somfy® (RTS)

## Applications

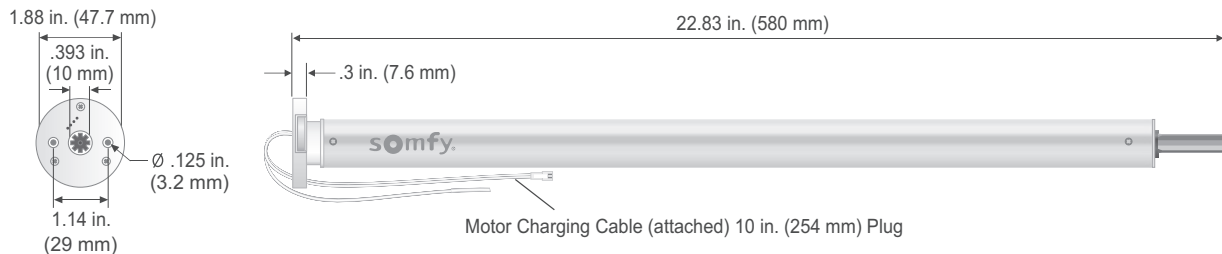


## Technical Features

<b>Voltage Supply</b>	12V DC
<b>Index Protection Rating</b> (interior use only)	IP 20
<b>Limit Switch Type</b>	Electronic

<b>Temperature Working Range</b>	32°F to 140°F (0°C to 60°C)
<b>Insulation Class</b>	Class III
<b>Antenna</b>	17.5 cm wire length, must not be cut or lengthened. For greatest RF range, must not be exposed and should not come in contact with metal surfaces. RF wire may need to be repositioned for optimal performance.

## Dimensions



## Specifications

<b>Nominal Torque</b>	1.1 Nm
<b>Nominal Speed</b>	20 rpm
<b>Adjustable Speed</b>	10-28 by increment of 2 rpm
<b>Radio Protocol</b>	RTS
<b>Radio Frequency</b>	433.42 MHz
<b>Battery Type</b>	12V 2600 mAh (built-in Lithium-ion)
<b>Battery Autonomy</b>	Only recharge once per year*
<b>Charging Time</b>	< 4.5 hours
<b>Low Battery Indicator</b>	LED (on motor head)

## Certifications

