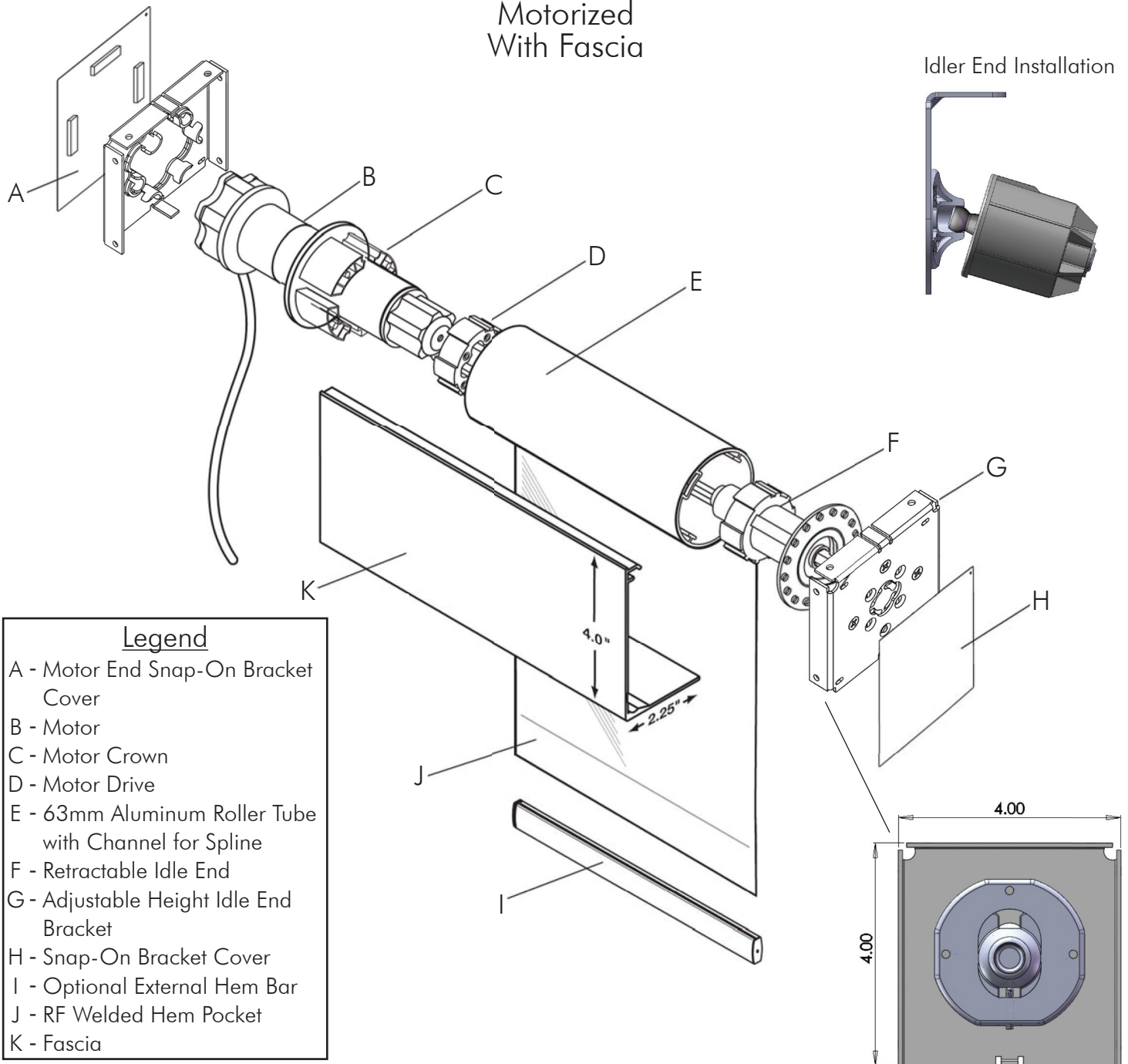
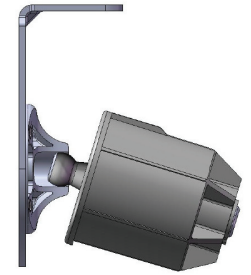


PolarTech Interior Shade

Motorized
With Fascia



Idler End Installation



Legend

- A - Motor End Snap-On Bracket Cover
- B - Motor
- C - Motor Crown
- D - Motor Drive
- E - 63mm Aluminum Roller Tube with Channel for Spline
- F - Retractable Idle End
- G - Adjustable Height Idle End Bracket
- H - Snap-On Bracket Cover
- I - Optional External Hem Bar
- J - RF Welded Hem Pocket
- K - Fascia

- ⚙ A line voltage AC motor is used to raise and lower the shade.
- ⚙ All motors come standard with a 6' pigtail. Additional plugs and lengths are available.
- ⚙ Roller tube is 63mm extruded aluminum with a channel to accept fabric spline making the shade panel easy to remove.
- ⚙ Standard adjustable idle end bracket allows shades to be leveled while in place.
- ⚙ Internal Hem Bar sealed in RF Welded Hem Pocket. Optional External Hem Bar is available.
- ⚙ 4.00" x 2.25" fascia available on line voltage AC motorized systems. Available in white, tan, clear, anodized, bronze or black.
- ⚙ Edge gap is 7/8" on the motor end and 7/8" on the retractable idler end.
- ⚙ Standard precision bearings for quiet operation are standard.

Out with the old. In with the View!

877-260-6110

POLAR SHADES®
sun control

polarshade.com

5520 Stephanie Street • Las Vegas, NV 89122 • info@polarshade.com